
TK04 - Software

Starting external applications from the measuring software

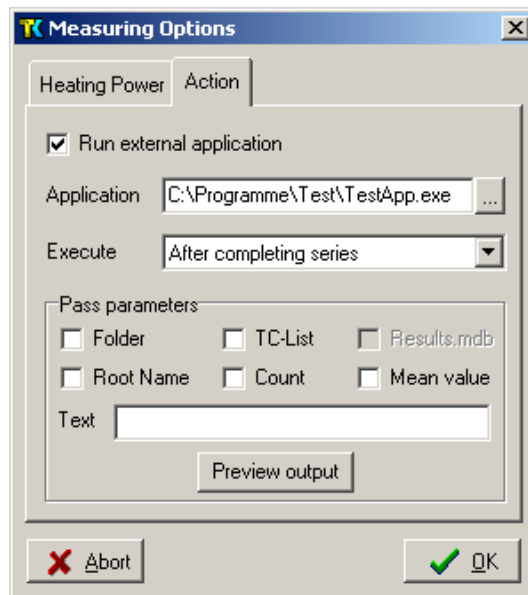
© 2007 TeKa Berlin, Germany

Overview

After finishing a measuring series, the TK04 measuring software V4.0.5 or higher can start a user-defined external application and pass it command line parameters. Which application should be started and which information should be passed can be configured by the user.

Setting the application to start

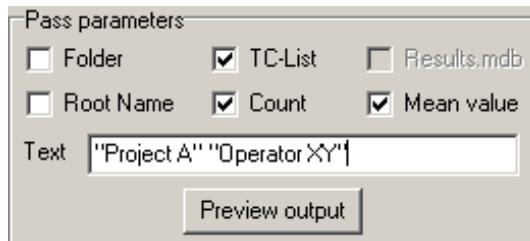
Start the TK04 software in measuring mode, open the options dialog by choosing *Options | Measuring* from the main menu and then select the *Action* tab.



Check the *Run external application* checkbox. Then enter the full path to the executable you wish to start in the *Application* field, or click on the browse button next to the input field and select an executable file. In addition to *.exe files, any other file type executable under Windows will work (e.g. application links, scripts or batch files). Currently, the selected application is executed after completing the measuring series, in future versions other events may be added to choose from.

Choosing the parameters to pass

You can choose any combination of the following five predefined parameters:

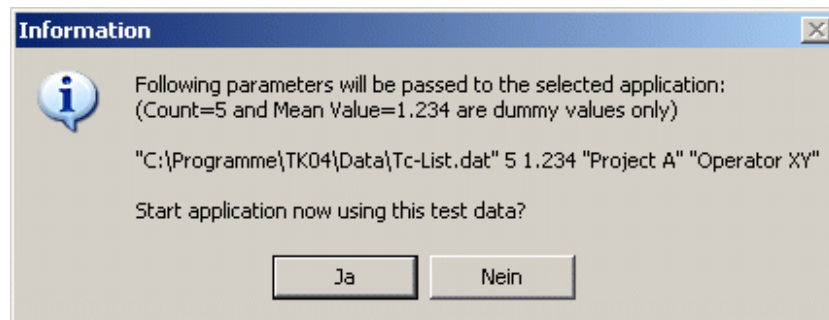


- **Folder** (the TK04 data directory specified in the measuring configuration)
- **TC-List** (file name including full path of the TC-List.dat file)
- **Root Name** (root name of the measuring series, selected in the measuring configuration)
- **Count** (no. of measurements contained in the mean value)
- **Mean Value** (mean thermal conductivity value of measuring series)

In addition to these values, user-defined text or parameter(s) can be entered in the *Text* input field. Please note that no quotes are added to the contents of this field automatically, so you can enter more than one parameter. If the input contains blanks, it may be necessary to enclose your single parameters in quotes yourself. (In a MS Windows command line usually each blank is interpreted as the beginning of the next parameter, unless grouped otherwise by using quotes.)

Preview the selected parameters

Press the *Preview output* button to check your selection. The dialog window displays the resulting parameters exactly as they will be added to the commandline of the selected application. If you have included *Count* or *Mean Value* in your selection, dummy values will be used for preview purposes.



The software then offers to start a test run using the displayed parameter line.